



## gama STL 90

### □ Acabados

#### Techos

### □ STANDARD: EUROPA o Q

Variantes:

FANTASIA\*

UNIVERSO\*

### ■ INOX SPOT

\*Posibilidad de fabricarse en INOX

### □ Suelos

PVC Negro

PVC Gris

PVC Beige

Goma a topos negros

\*Silestones, granitos, etc.

\*Posibilidad de servir pavimentos o preparar cabinas sobre pedido cliente

### Paneles

#### Gama Luxe:

PPS17 Negro

PPS14 Gris

PPS31 Azul

### Complementos de la decoración

#### Pasamanos:

Pasamano Inox diam. 40 mm

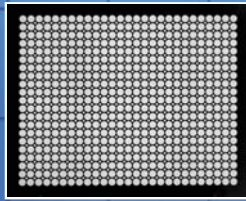
### Características

Cabina fabricada en paneles modulares de chapa plastificada sin separación.

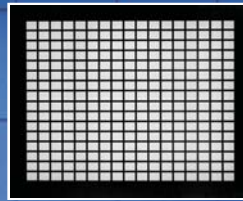
Rinconeras en Acero Brillo a 45° o 90°, zócalos y embocaduras en Inox GP220, incluye Espejo Modular parsol bronce.



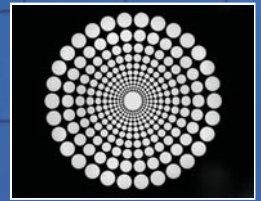
## Techos



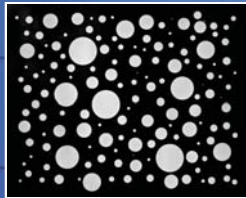
Europa



Q



Fantasia



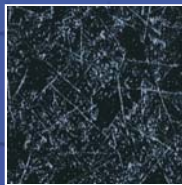
Universo



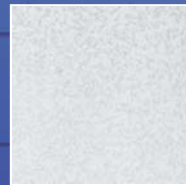
Inox Spot

## Paneles

Gama Luxe



PPS17 Negro

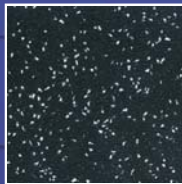


PPS14 Gris



PPS31 Azul

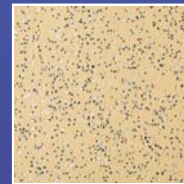
## Suelos



PVC Negro



PVC Gris



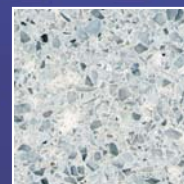
PVC Beige



Goma a topos negros



Granitos



Silestone

