



## Características

Cabina fabricada en paños completos de formica o melamina.  
Rinconeras en Acero Brillo a 45° o 90°, Zócalos y embocaduras en Inox GP220.



# gama

## GARBI 45 - GARBI 90

### Acabados



#### Techos

STANDARD: EUROPA o Q

Variantes:



FANTASIA\*  
UNIVERSO\*  
INOX SPOT



\*Posibilidad de fabricarse en INOX

#### Suelos



PVC Negro  
PVC Gris  
PVC Beige  
Goma a topos negros  
\*Silestone, granitos, etc.

\*Posibilidad de servir pavimentos o preparar cabinas sobre pedido cliente

#### Paneles

##### Gama Formica:

Serie Color system

Serie Madera

Serie Reflection

\*Cualquier color del catálogo de la marca Formica de las series indicadas

##### Gama Melamina:

050 Raices

T-32 Arena

T-34 Crema

T-35 Verde

#### Complementos de la decoración

##### Pasamanos:

Pasamanos Inox diam. 40 mm

##### Espejos:

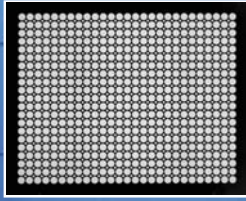
MODULAR 390X2005 (Parsol bronce, gris e incoloro)

MURAL (Parsol bronce, gris e incoloro)

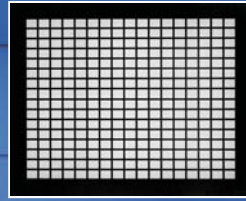
MEDIO ESPEJO (Parsol bronce, gris e incoloro)

# GARBI 45 - GARBI 90

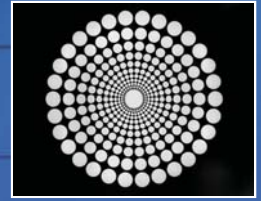
## Techos



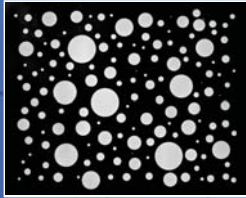
Europa



Q



Fantasia



Universo



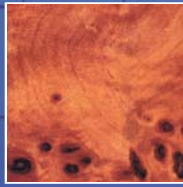
Inox Spot

## Paneles

### Gama Formica



Serie Color System

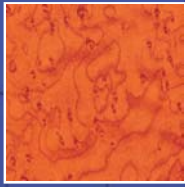


Serie Madera



Serie Reflection

### Gama Melamina



050 Raices



T-32 Arena

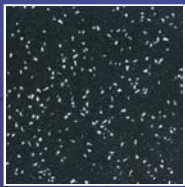


T-34 Crema

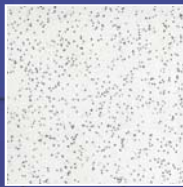


T-35 Verde

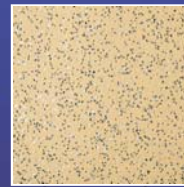
## Suelos



PVC Negro



PVC Gris



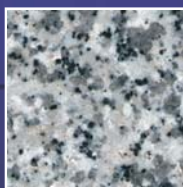
PVC Beige



Goma a topos negros



Granitos



Silestone

